

GUB Equipment Housings

Cl. I, Div. 1 & 2, Groups B†, C, D
Cl. II, Div. 1, Groups E, F, G
Cl. II, Div. 2, Groups F, G
Cl. III
NEMA 4, 7B†CD, 9EFG

Explosionproof
Dust-Ignitionproof
Raintight
Wet Locations
Watertight

1E

Applications:

GUB equipment housings are used in threaded rigid conduit systems in hazardous areas:

- To house relays, contactors, terminal blocks or other equipment and devices
- Indoors or outdoors

Features:

- Supplied with dome cover and adjustable mounting position plate which extends into dome cover
- Mounting plate is adjustable. It may be located in center of cover so small devices can be mounted on both sides of plate or toward either side of dome cover when larger devices are mounted on one side of plate (see dimension "P")

Certifications and Compliances:

- NEC:
 - GUB3100, GUB3177
 - Class I, Division 1 & 2, Group D
 - Class II, Division 1, Groups E, F, G
 - Class II, Division 2, Groups F, G
 - Class III
 - GUB1440, GUB1100
 - Class I, Division 1 & 2, Groups B, C, D
 - Class II, Division 1, Groups E, F, G
 - Class II, Division 2, Groups F, G
 - Class III
- UL Standard: 1203
- CSA Standard: C22.2 No. 30

Standard Materials:

- Bodies – *Feraloy*® iron alloy
- Covers – copper-free aluminum
- Mounting plates – sheet steel

Standard Finishes:

- *Feraloy* iron alloy – electrogalvanized and aluminum acrylic paint
- Copper-free aluminum – natural
- Sheet steel – zinc plated

Options:

Description

Material – Bodies, copper-free aluminum

Suffix

SA

Other sizes of boxes and covers available. Information on request

For conduit liner ordering information, see page 860.
†Check Certifications and Compliances for specific hazardous area ratings for each catalog #.

Crouse-Hinds
by **E.T.N**



GUB with cover removed showing mounting plate.



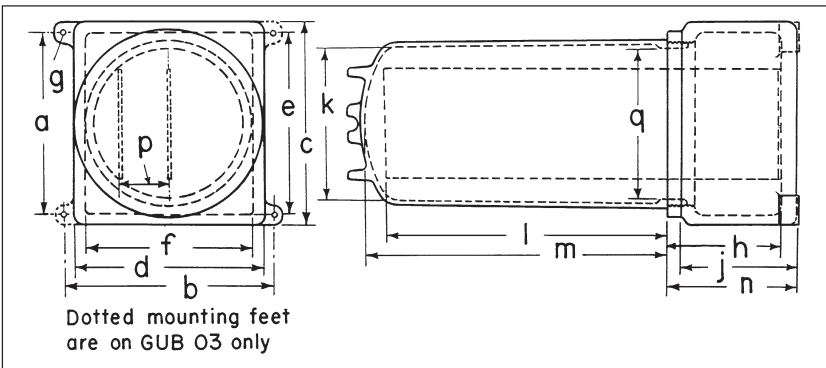
GUB with dome cover.

Ordering Information

Body Size	Nominal Depth of Cover	Dimension		Width of Mounting Plate	Cat. #
		l	m		
GUB01	4	3 ⁵ / ₁₆	4	3 ¹³ / ₁₆	GUB1440 GUB1100
	10	9 ¹³ / ₁₆	10 ⁷ / ₁₆		
GUB03	10	9 ⁹ / ₈	10 ¹ / ₁₆	6 ¹ / ₂	GUB3100 GUB3177
	17	16 ³ / ₈	17 ⁷ / ₈		

Conduit seals are required within 1½" of all conduit entrances for Class I, Division 1, Group B hazardous areas. For other sealing requirements consult the National Electrical Code®/Canadian Electrical Code.

Dimensions In Inches:



Body Size	GUB01	GUB03
a	5 ³ / ₄	10 ³ / ₄
b	7 ¹ / ₂	12 ¹ / ₈
c	7	12
d	6 ¹ / ₂	11
e	6 ¹ / ₂	10 ³ / ₄
f	5 ⁷ / ₈	9 ³ / ₄
g	1 ¹³ / ₃₂	7 ¹ / ₁₆
h	4 ³ / ₁₆	6 ⁵ / ₈
j	4	6 ⁵ / ₈
k	5	9 ¹ / ₈
l	see listing	
m	see listing	
n	4 ⁷ / ₈	7 ⁵ / ₈
p	1 ¹ / ₂ max	2 ⁷ / ₈ max
q	5 ¹ / ₁₆	8 ⁷ / ₈