

1E EMH Instrument Housings

Cl. I, Div. 1 & 2, Group D
Cl. II, Div. 1, Groups E, F, G
Cl. II, Div. 2, Groups F, G
Cl. III
NEMA 3, 7D, 9EFG, 12

Explosionproof
Dust-Ignitionproof
Raintight
Wet Locations

Applications:

EMH instrument housings are used:

- To enclose 2½" or 3½" diameter round, flush rim-mounting meters, whose scale or dial would be visible in the 2½" diameter glass window. Typical types of instruments or meters are ammeters, voltmeters, etc.
- In specific hazardous atmospheres such as encountered in oil refineries, chemical plants, paint and varnish manufacturing plants, certain hazardous metal finishing areas, coal processing locations, granaries and grain processing plants

Features:

- Sight-glass in cover permits viewing of instrument dial or setting.
- Enclosures are non-magnetic, available in surface mounting and flush panel mounting. The cylindrical extension of the cover opening on the flush bodies will project through a hole in panel. Thickness of panel must not exceed ¼" to insure flamtight assembly of cover threads with body threads.
- Mounting plates and posts in bodies support the instrument close to the heavy glass window in cover. Maximum depth of instrument extending from outboard end of posts towards the back wall of enclosure body is 3". There is ample wiring space in back of instruments.
- Bodies have bosses on all four sides and back for drilling and tapping of conduit entrances.
- Dead end and through feed arrangements for ¾" rigid conduit are standard listings.

Certifications and Compliances:

- NEC/CEC:
 - Class I, Division 1 & 2, Group D
 - Class II, Division 1, Groups E, F, G
 - Class II, Division 2, Groups F, G
 - Class III
- NEMA/EEMAC: 3, 7D, 9EFG, 12
- UL Standard: 1203
- CSA Standard: C22.2 No. 30

Standard Materials:

- Bodies – copper-free aluminum
- Covers – copper-free aluminum
- Windows – heat strengthened plate glass

Standard Finishes:

- Natural

Instrument Housings

Style	Conduit Openings	Size	Cat. #
Surface	One in Side (Dead End)	¾	EMH521 20000
	Two in Sides (Through Feed)		EMH533 20000
			EMH521 20200
			EMH533 20200
Flush	One in Side (Dead End)	¾	EMH511 20000
	Two in Sides (Through Feed)		EMH534 20000
			EMH511 20200
			EMH534 20200

Standard Meters

Housed in EMH511, EMH521†

Manufacturer	Model	Size
Weston	201 Series	2½
	301 Series	3½
Westinghouse	N-351 Series	3½
	125 Series	2½
	135 Series	
	145 Series	
	155 Series	
Simpson	25 Series	3½
	35 Series	
	45 Series	
	55 Series	
	75 Series	2½
	3222 Series	
	3282 Series	
	3223 Series	3½
	3283 Series	

†Type-Round Flush

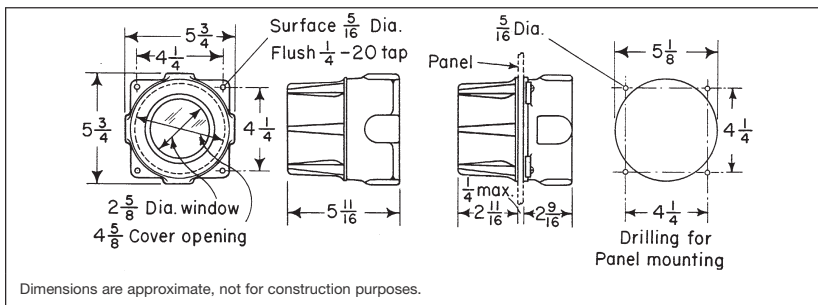
Standard Meters

Housed in EMH533, EMH534

Manufacturer	Model	Size	Type
G.E.	AW-91 Series	2½	Rect. Flush
	DW-91 Series		
Weston	201 Series	2½	Square Flush
	1721 Series		Rect. Flush

Dimensions

In Inches:



Flush



Surface

Options:

- Other conduit hub sizes and arrangements can be furnished.