

Load Break Disconnect Switches FSLBS

UL 508 Non-Fused Load Break Switches

The FSLBS Load Break Switch is a newly designed industrial-grade switch capable of making or breaking loads up to 600V. It is suitable as a motor disconnect. Extremely compact and robust, these switches have a variety of mounting options including DIN-rail, base, or door-mounting. A wide assortment of handles, shafts and accessories are available to accommodate any installation requirement. Both the toggle and rotary styles have a built-in pad-lockable hasp and the integrated box terminals are finger-safe to IP-20. Utilizing a patented, innovative design, the FSLBS can be actuated from the front or either side.

Highlights:

- **Terminals rated for 2 wires!**
- Front or side operation
- Padlockable
- Compact
- Robust
- DIN-rail, base, or door- mounting
- Choice of handles and shafts
- Side-mount auxiliary contacts and additional poles
- Double-break, silver-plated contacts

Applications:

- On/Off switching and disconnect applications in circuits up to 600V, 80A on the load side of branch circuit protection fusing.
- Motor controller, suitable as motor disconnect
- Motor isolator
- General purpose



Ratings:

Volts : 600VAC

Amps : 16, 25, 40, 63, and 80A

Suitable as motor disconnect
up to 40hp

Approvals:

- UL 508 listed E196672
- CSA 22.2 #14
- IEC 60947-3



Load Break Disconnect Switches FSLBS

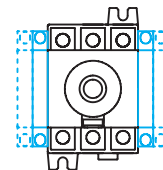
Catalog Numbers - FSLBS

		Ampere Rating			16A	25A	40A	63A	80A
Select a Switch	Toggle				FSLBST16	FSLBST25	FSLBST40	FSLBST63	FSLBST80
	Rotary				FSLBS16	FSLBS25	FSLBS40	FSLBS63	FSLBS80
Select a Handle & Shaft	Direct Operation Handle		No Shaft Required		FSHD	FSHD	FSHD	FSHD	FSHD
			Select a Handle	NEMA 1, 3R, 12	Black	FSH00BR*	FSH00BR*	FSH00BR*	FSH0BR*
	Thru-door		NEMA 1, 3R, 12, 4, 4X	Black	FSH00BR4*	FSH00BR4*	FSH00BR4*	FSH0BR4*	FSH0BR4*
			NEMA 1, 3R, 12	Red	FSH00RR*	FSH00RR*	FSH00RR*	FSH0RR*	FSH0RR*
			NEMA 1, 3R, 12, 4, 4X	Red	FSH00RR4*	FSH00RR4*	FSH00RR4*	FSH0RR4*	FSH0RR4*
			Select a Shaft	150mm/5.9"		FS150	FS150	FS150	FS150
		200mm/7.9"		FS200	FS200	FS200	FS200	FS200	
		320mm/12.6"		FS320	FS320	FS320	FS320	FS320	
		Select Accessories	Auxiliary Contacts		NO/NC	FSACNONC	FSACNONC	FSACNONC	FSACNONC
	NO/NO				FSACNONO	FSACNONO	FSACNONO	FSACNONO	FSACNONO
Terminal Shrouds				FSTS40	FSTS40	FSTS40	FSTS80	FSTS80	
Door Mounting Kit				FSDMK	FSDMK	FSDMK	FSDMK	FSDMK	

*Either FSH00xxx or FSH0xxx can be used.

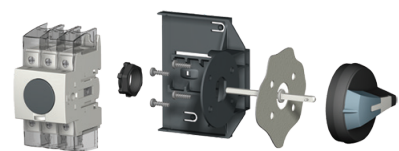
Pre-Break Auxiliary Contacts

Mount directly to the side of the switch. The top contact is pre-break, the bottom contact makes with the switch. Up to four sets of auxiliary contacts can be added.



Door Mounting Kit

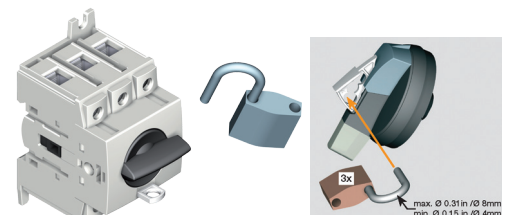
Allows mounting of the switch to a door or side panel. Utilizing the switch's side actuation provides access to the terminal screws, enabling the wiring to be completed after installation.



Padlocking Capabilities

Switch: With the switch in the 'Off' position, a hasp can be deployed that will lock the switch in this position.

Handle: The white lever in the center of the handle can be rotated out to reveal openings for up to 3 padlocks.



Load Break Disconnect Switches FSLBS

UL and CSA Characteristics - FSLBS

Technical Characteristics	16A	25A	40A	63A	80A
Short circuit current rating at 600 VAC	10kA/65kA	10kA/65kA	10kA/65kA	65kA/50kA	65kA/50kA
Fuse type	J/J	J/J	J/J	J	J
Maximum fuse rating (A)	60/30	60/30	60/30	60/100	60/100
Maximum Horsepower Rating / Max. motor FLA 3 ϕ					
208 VAC	3 / 11A	7.5 / 24A	7.5 / 24A	15 / 46A	15 / 46A
220 - 240 VAC	5 / 15A	7.5 / 22A	7.5 / 22A	20 / 54A	20 / 54A
440 - 480 VAC	10 / 14A	15 / 17A	20 / 27A	40 / 52A	40 / 52A
600 VAC	10 / 11A	20 / 22A	25 / 27A	40 / 41A	40 / 41A
Connection					
Solid (AWG)	#14 - #10	#14 - #10	#14 - #10	#14 - #10	#14 - #10
	2x #12	2x #12	2x #12	2x #12	2x #12
Stranded (AWG)	#14 - #4	#14 - #4	#14 - #4	#14 - #1	#14 - #1
	2x (#14 - #12)	2x (#14 - #12)	2x (#14 - #12)	2x (#10 - #6)	2x (#10 - #6)
Torque	26.5 lb-in/3 Nm	26.5 lb-in/3 Nm	26.5 lb-in/3 Nm	31.1 lb-in/3.5 Nm	31.1 lb-in/3.5 Nm
Auxiliary Contacts					
Electrical characteristics	A300	A300	A300	A300	A300

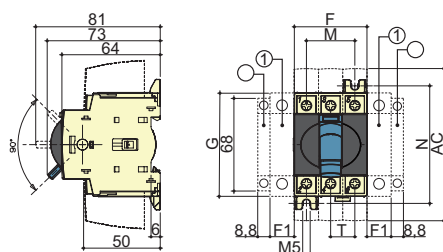
FSLBS Dimensions (Inch/mm)

Rating	AC	F	F1	G	J	M	N	T
16, 25, 40A	4.33 / 110	1.77 / 45	0.59 / 15	2.68 / 68	0.59 / 15	1.18 / 30	2.95 / 75	0.59 / 15
63, 80A	4.33 / 110	2.07 / 52.5	0.69 / 17.5	3.00 / 76	0.69 / 17.5	1.38 / 35	3.35 / 85	0.69 / 17.5

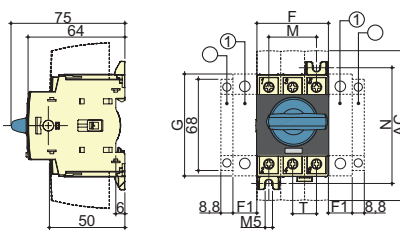
1. Additional Pole - maximum of two, one each side
2. Auxiliary Contact - maximum of four, two each side

E. Minimum is 1.18"/30mm, maximum is 14.6"/372mm
D. Minimum is 1.18"/30mm, maximum is 9.25"/235mm

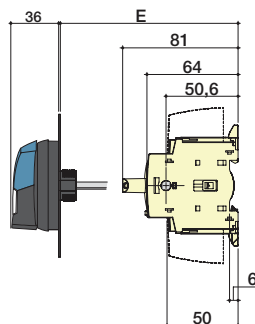
16A to 40A Direct operation "Toggle"



63A and 80A Direct operation "Rotary"



External front operation



External side operation

