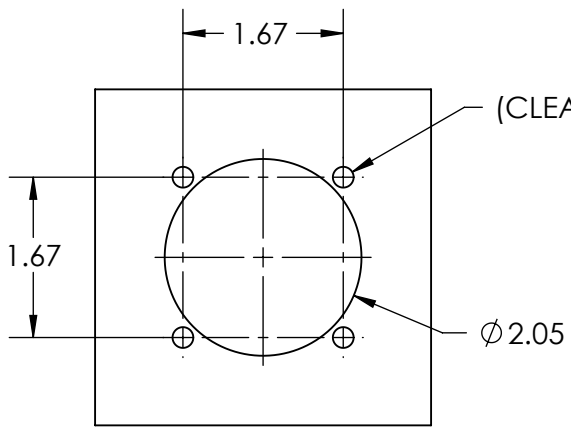
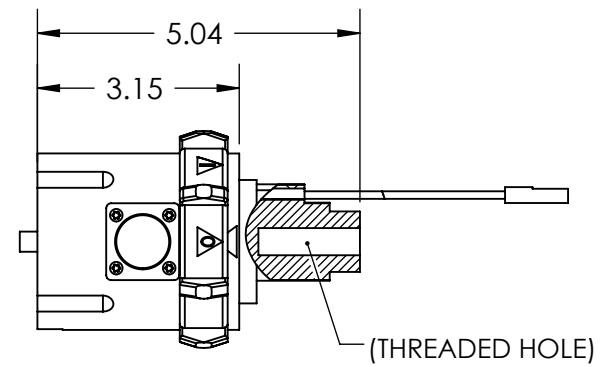
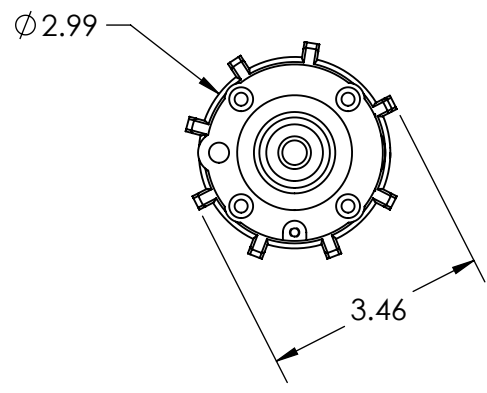
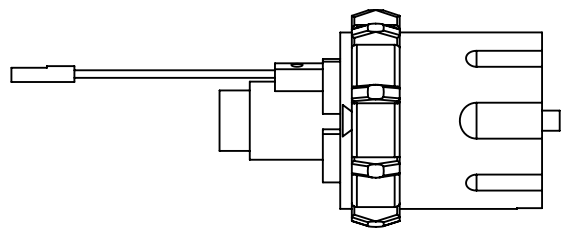
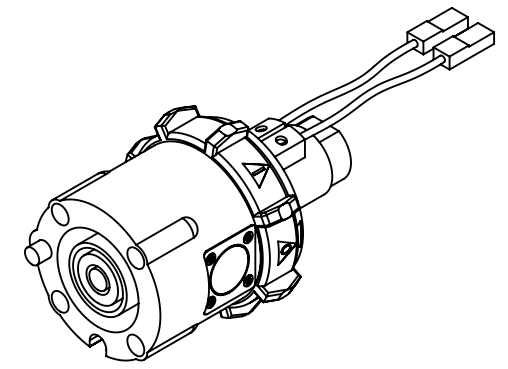
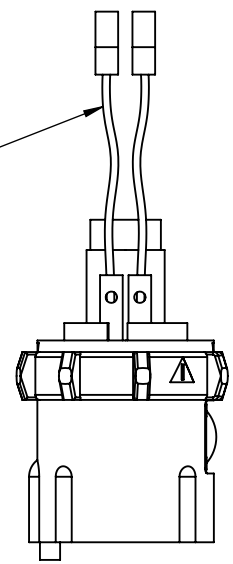


This drawing is the property of MELTRIC Corporation, Franklin (Milwaukee), Wisconsin, USA. Any unauthorized copying of this drawing by any means, ENG/RD/06 REV: 20 ISSUED DATE: 1/15/11 or disclosure of its contents to any person not authorized by MELTRIC Corporation or its agents to receive it, is strictly prohibited.

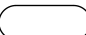
G F E D C B A


PRE-WIRED PILOT CONTACTS:  
APPROX. 4" WIRE LENGTH WITH  
1/4" FEMALE SPADE TERMINALS



4X  $\phi$ .217  
(CLEARANCE HOLE FOR M5-0.8  
MACHINE SCREW)

ENTRY HOLE PATTERN

TOLERANCES UNLESS OTHERWISE SPECIFIED	
MACHINED SURFACES #error: broken link	<b>ENGLISH</b>  <b>0.X ±0.05</b> <b>0.XX ±0.01</b> <b>0.XXX ±0.005</b>
GROUND SURFACES #error: broken link	
ANGLE TOLERANCE ±1°	
REMOVE BURRS & SHARP EDGES TO .015 MAX.	
 DIMENSIONS SHOWN IN OVALS ARE INSPECTION DIMENSIONS.	

		DRAWING TITLE:	
DRAWN	APPROVED	SP 600A RECEPTACLE WITHOUT LUG	
DATE:	SCALE	MATERIAL:	
	NTS	BLACK POLY CASING	
SHEET:	PART NUMBER		REVISION
1 OF 1	ERROR!:PartNo45-4400x-P80		

1  
2  
3  
4  
5  
6