

MULTIPIN PXN12c

PRODUCT FEATURES



Metal Casing

Provides excellent durability and protection.

IP65/IP66 Watertightness

Environmental rating is achieved as soon as the plug is latched to the receptacle. There is no additional rings to tighten.

Lid

Provides additional protection from harsh environments.

Recessed Contacts

Provides IP2X protection from live electrical parts.

Locking Provision

Turn triangular screw with special tool (provided) to prevent plug removal.

Spring-Loaded Butt-Style Contacts

Ensures optimal contact force and superior electrical performance over thousands of operations.

Silver-Nickel Contacts

Silver-nickel contact material provides superior conductivity, durability and corrosion resistance.

Hazardous Location Listings

ATEX		
	II 2 G D	Ex e IIC Gb Ex tb IIIC Db
Suitable for Zone 1 & 2 (gas) 21 & 22 (dust)		
-40°C ≤ Ta ≤ +55°C		T5 T69°C
Ex ia or ib IIC T6 Gb		
IECEX LCIE 14.0041X/LCIE 07 ATEX 6070X		

Highlighted Feature

- Crimped Contacts**
 PXN12c devices now feature contacts that can be crimped or soldered. Each device is supplied with 13 contacts so that the product can be set up to suit application needs.

Simple Assembly and Disassembly

DSN37c shown



Assembly

To insert contacts when they have been wired is simple. Push wired contact into rear of insulator until it stops to complete the installation.



Disassembly

To remove, use the tool provided. Push tool from front onto contact until tool stops. Contact is then released at rear of insulator.

PXM12c Hazardous Location Multipin – 10 A

Devices rated for hazardous locations are not returnable.

Connector (female recept w/handle)



or

Receptacle/Angle (female)



or

Recept/Angle/Box (female)



Voltage	Polarity	Cable Range	Part # Metal	Part # Metal	Part # Metal
220V	11P+G	.35 - .63"	06-A3001-25M	06-A7001	06-A0001-25M
220V	11P+G	.47 - .82"	06-A3001	06-A7001	06-A0001

For international configurations (IEC/CE) visit meltric.com/international-catalog or contact customer service at 800-433-7642.

Plug (male inlet w/handle)



or

Inlet/Angle (male)



or

Inlet/Angle/Box (male)



Voltage	Polarity	Cable Range	Part # Metal	Part # Metal	Part # Metal
220V	11P+G	.35 - .63"	06-A1001-25M	06-A9001	06-A6001-25M
220V	11P+G	.47 - .82"	06-A1001	06-A9001	06-A6001

For international configurations (IEC/CE) visit meltric.com/international-catalog or contact customer service at 800-433-7642.

ACCESSORIES

PROTECTIVE INLET/PLUG CAP



01-NA426

MULTI-CONTACT REMOVAL TOOL



61-CA593

EUROPEAN CRIMPING TOOL



61-CA500

CRIMPER TOOL (Greenlee or equal)



4CN30

BAG OF 13 FEMALE CONTACTS



01-AA213

Includes insulation sleeves and ferrules

BAG OF 13 MALE CONTACTS



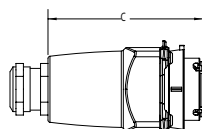
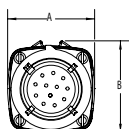
01-AA113

Includes insulation sleeves and ferrules

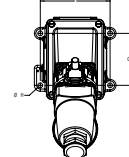
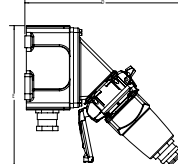
PXM12c DIMENSIONS – Provided in inches

Dimensions are for reference only and may change depending on accessories used. For precise dimensions contact MELTRIC Engineering.

Plug



Wall box/angle/receptacle/plug



PRODUCT	A	B	C	D	E	F	G	H
PXM12c	2.3	2.42	4.09	8.37	7.54	3.7	2.76	0.26